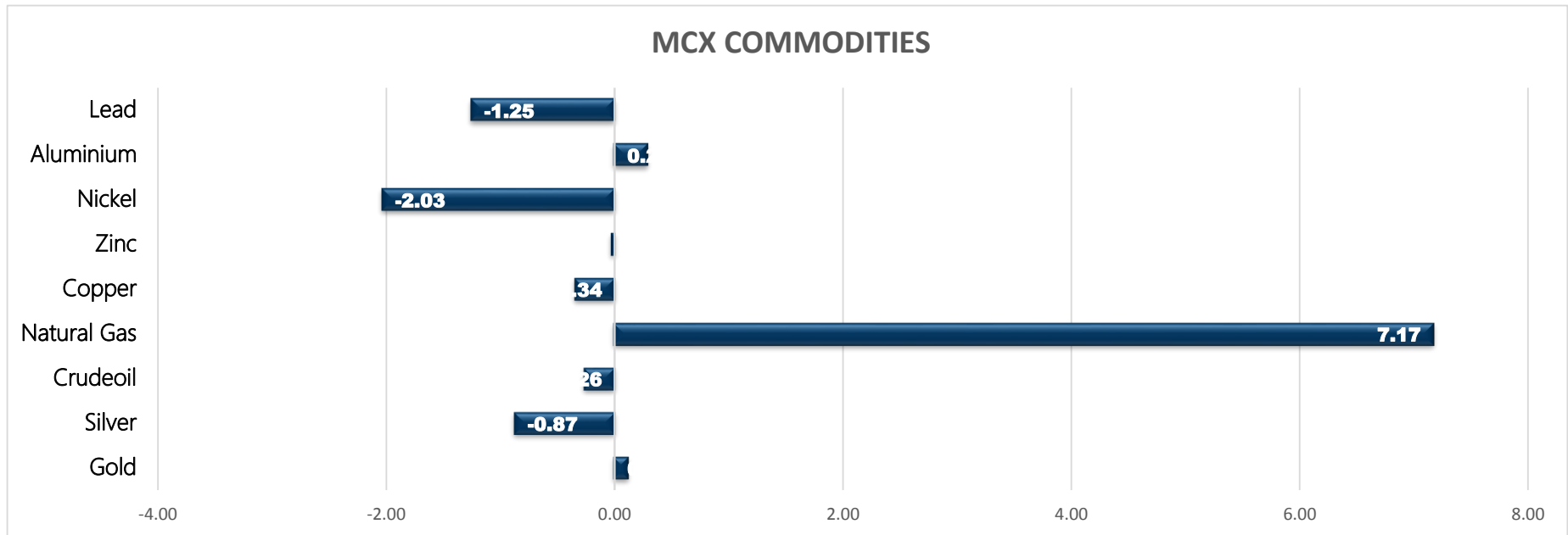


Commodity	Close	% Change
Gold	47237.00	0.12
Silver	62723.00	-0.87
Crudeoil	5044.00	-0.26
Natural Gas	312.50	7.17
Copper	714.10	-0.34
Zinc	246.70	-0.02
Nickel	1410.70	-2.03
Aluminium	209.00	0.29
Lead	177.05	-1.25

Commodity	Ltp*	% Change
Gold\$	1797.10	0.30
Silver\$	23.64	0.42
Crudeoil\$	67.42	-1.38
Natural Gas\$	4.18	7.36
Lme Copper	9325.50	0.28
Lme Zinc	2991.00	-0.23
Lme Nickel	18680.00	-0.66
Lme Lead	2292.50	0.07
Lme Aluminium	2628.50	0.32

Economical Data	
EUR	German Import Prices m/m
USD	Core PCE Price Index m/m
USD	Goods Trade Balance
USD	Personal Income m/m
USD	Personal Spending m/m
USD	Prelim Wholesale Inventories m/m
USD	Fed Chair Powell Speaks
USD	Revised UoM Consumer Sentiment
USD	Revised UoM Inflation Expectations



**MCX MARKET SYNOPSIS**

Contract	Open	High	Low	Close	Rs Chg	% Chg	Volume	OI	OI % Chg
Copper Sep	714.45	716.30	711.10	714.10	-2.45	-0.34	11765	4136	2.07
Copper Oct	716.25	717.25	713.55	715.00	-3.70	-0.51	134	118	13.46
Zinc Sep	246.00	247.40	244.40	246.70	-0.05	-0.02	4352	1188	5.04
Zinc Oct	244.35	245.70	244.35	245.10	-0.30	-0.12	24	14	40.00
Nickel Sep	1436.00	1438.10	1406.60	1410.70	-29.20	-2.03	8166	1586	29.47
Nickel Oct	1434.80	1434.80	1405.00	1406.80	-30.40	-2.12	65	24	242.86
Aluminium Sep	207.00	209.50	207.00	209.00	0.60	0.29	3643	1805	-0.88
Aluminium Oct	206.85	208.00	206.60	207.65	0.05	0.02	44	45	60.71
Lead Sep	179.00	179.20	176.25	177.05	-2.25	-1.25	2776	1173	34.21
Lead Oct	178.20	178.20	176.70	177.30	-1.55	-0.87	11	6	500.00

**MCX PIVOT**

Contract	Sup - 3	Sup - 2	Sup - 1	Pivot	Res - 1	Res - 2	Res - 3	OI Status
Copper Sep	706.10	708.60	711.30	713.80	716.50	719.00	721.70	Fresh Selling
Zinc Sep	242.00	243.20	245.00	246.20	248.00	249.20	251.00	Fresh Selling
Nickel Sep	1367.40	1387.00	1398.90	1418.50	1430.40	1450.00	1461.90	Fresh Selling
Aluminium Sep	205.00	206.00	207.50	208.50	210.00	211.00	212.50	Short Covering
Lead Sep	172.80	174.50	175.80	177.50	178.80	180.50	181.80	Fresh Selling

**INTERNATIONAL MARKET SYNOPSIS**

Commodity	Open	High	Low	Ltp*	Chg	% Chg	LME STOCKS	
LME Copper	9350.00	9379.00	9268.00	9299.00	26.50	0.28	LME Copper	0
LME Zinc	3013.50	3022.00	2976.50	2998.00	-7.00	-0.23	LME Zinc	125
LME Nickel	19205.00	19250.00	18740.00	18805.00	-125.00	-0.66	LME Nickel	-786
LME Lead	2311.00	2324.00	2268.50	2291.00	1.50	0.07	LME Lead	-300
LME Aluminium	2620.00	2639.00	2593.50	2620.00	8.50	0.32	LME Aluminium	14450

**INTERNATIONAL PIVOT**

Commodity	Sup - 3	Sup - 2	Sup - 1	Pivot	Res - 1	Res - 2	Res - 3
LME Copper	9141	9204	9252	9315	9363	9426	9474
LME Zinc	2930	2953	2976	2999	3021	3044	3067
LME Nickel	18103	18422	18613	18932	19123	19442	19633
LME Lead	2210	2239	2265	2295	2321	2350	2376
LME Aluminium	2551	2572	2596	2618	2642	2663	2687

COPPER

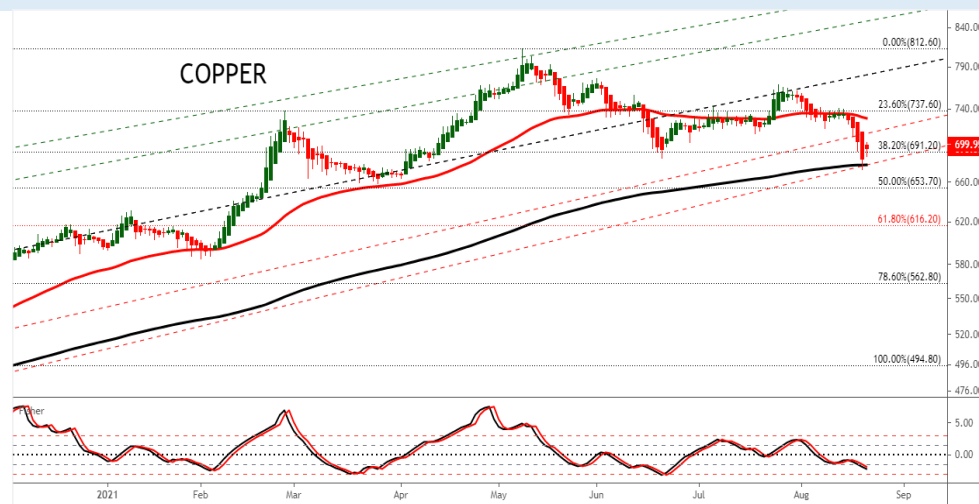
Copper trading range for the day is 708.6-719.

Copper dropped as China's central bank drops hints that further monetary policy easing is coming, which ought to restore confidence in the economy

Union at BHP's Cerro Colorado calls on workers to reject contract offer

On-warrant copper inventories in LME-registered warehouses fell to 169,800 tonnes from almost 240,000 tonnes a week ago, suggesting tighter supply.

Warehouse stock for Copper at LME was at 254300mt that is unchanged mt.



ZINC

Zinc trading range for the day is 243.2-249.2.

Zinc settled flat as global stock markets wobbled ahead of a highly anticipated speech by U.S. Federal Reserve Chair Jerome Powell on Friday.

The mood among German consumers darkened heading into September while lending to euro zone companies continued to slow last month.

The global zinc market was undersupplied by 20,200 tonnes in June following a revised deficit of 23,500 tonnes in May

Warehouse stock for Zinc at LME was at 239650mt that is up by 125mt.



NICKEL

Nickel trading range for the day is 1387-1450.

Nickel prices dropped in response to concerns that government efforts to cool the property market could ripple through the economy.

The growth rate of US new orders of durable goods in July fell slightly

The global nickel market deficit narrowed to 20,100 tonnes in June compared a shortfall of 23,600 tonnes in May

Warehouse stock for Nickel at LME was at 196290mt that is down by -786mt.



ALUMINIUM

Aluminium trading range for the day is 206-211.

Aluminium gained due to output cut at aluminium plants in Yunnan, Guangdong and Inner Mongolia on power curtailment and dual control of energy consumption.

Data showed that domestic aluminium social inventories stood at 753000 mt, up 12000 mt on the week, most of which was contributed by Gongyi.

Data showed that China's social inventories of aluminium billet across five major consumption areas fell 6,200 mt

Warehouse stock for Aluminium at LME was at 1306950mt that is up by 14450mt.



COPPER PRICE MOVEMENT SINCE 2012

Year	JAN	FEB	MAR	APR	MAY	JUN	JUL	AUG	SEP	OCT	NOV	DEC	Growth
2012	417.15	417.70	431.65	443.90	420.25	429.40	422.55	424.30	441.05	419.70	436.30	443.75	37.75
	2.75	0.13	3.34	2.84	-5.33	2.18	-1.60	0.41	3.95	-4.84	3.96	1.71	9.30
2013	440.05	418.20	410.20	381.00	413.05	406.60	421.55	486.95	466.40	452.50	444.40	468.55	24.80
	-0.83	-4.97	-1.91	-7.12	8.41	-1.56	3.68	15.51	-4.22	-2.98	-1.79	5.43	5.59
2014	444.95	443.20	404.15	403.00	410.80	422.35	436.10	417.95	416.00	414.70	390.75	399.10	-69.45
	-5.04	-0.39	-8.81	-0.28	1.94	2.81	3.26	-4.16	-0.47	-0.31	-5.78	2.14	-14.82
2015	342.85	371.80	378.45	404.60	386.65	368.75	335.40	341.75	342.70	336.55	301.15	315.50	-83.60
	-14.09	8.44	1.79	6.91	-4.44	-4.63	-9.04	1.89	0.28	-1.79	-10.52	4.77	-20.95
2016	311.60	322.00	321.25	334.20	312.50	327.15	329.70	305.60	328.55	326.05	396.05	372.90	57.40
	-1.24	3.34	-0.23	4.03	-6.49	4.69	0.78	-7.31	7.51	-0.76	21.47	-5.85	18.19
2017	406.10	397.85	380.75	367.60	368.75	385.20	410.65	434.55	427.95	444.70	431.40	466.00	93.10
	8.90	-2.03	-4.30	-3.45	0.31	4.46	6.61	5.82	-1.52	3.91	-2.99	8.02	24.97
2018	450.90	446.00	436.80	449.40	457.05	446.15	430.15	414.00	452.95	435.70	433.10	407.75	-58.25
	-3.24	-1.09	-2.06	2.88	1.70	-2.38	-3.59	-3.75	9.41	-3.81	-0.60	-5.85	-12.50
2019	437.60	464.70	451.05	450.30	404.50	411.05	444.15	443.95	438.05	437.95	432.60	441.25	33.50
	7.32	6.19	-2.94	-0.17	-10.17	1.62	8.05	-0.05	-1.33	-0.02	-1.22	2.00	8.22
2020	427.25	421.80	376.80	403.45	416.20	464.70	500.75	527.30	525.20	526.40	582.30	594.70	153.45
	-3.17	-1.28	-10.67	7.07	3.16	11.65	7.76	5.30	-0.40	0.23	10.62	2.13	34.78
2021	596.40	702.95	667.95	754.10	768.85	721.50	751.70						157.00
	0.29	17.87	-4.98	12.90	1.96	-6.16	4.19						26.40
Average	-1.25	2.69	-2.53	1.37	-0.91	0.67	3.00	1.32	-0.10	0.35	2.05	2.44	Average

ZINC PRICE MOVEMENT SINCE 2012

Year	JAN	FEB	MAR	APR	MAY	JUN	JUL	AUG	SEP	OCT	NOV	DEC	Growth
2012	105.60	104.00	102.85	107.10	107.15	103.95	103.20	100.60	110.45	99.30	110.55	111.45	13.00
	7.26	-1.52	-1.11	4.13	0.05	-2.99	-0.72	-2.52	9.79	-10.10	11.33	0.81	13.20
2013	113.95	111.05	102.90	110.50	106.30	109.70	109.55	128.25	117.80	118.25	116.00	129.05	17.60
	2.24	-2.54	-7.34	7.39	-3.80	3.20	-0.14	17.07	-8.15	0.38	-1.90	11.25	15.79
2014	122.80	130.95	119.05	123.95	122.40	132.45	144.55	142.90	141.10	143.40	138.00	137.20	8.15
	-4.84	6.64	-9.09	4.12	-1.25	8.21	9.14	-1.14	-1.26	1.63	-3.77	-0.58	6.32
2015	130.40	127.70	129.90	149.75	141.05	127.10	122.85	121.30	108.90	109.10	103.20	106.15	-31.05
	-4.96	-2.07	1.72	15.28	-5.81	-9.89	-3.34	-1.26	-10.22	0.18	-5.41	2.86	-22.63
2016	109.25	122.45	118.40	129.20	129.30	142.15	148.80	155.90	158.10	163.90	185.55	173.80	67.65
	2.92	12.08	-3.31	9.12	0.08	9.94	4.68	4.77	1.41	3.67	13.21	-6.33	63.73
2017	193.10	187.70	180.40	169.45	165.95	178.25	179.50	200.95	210.20	215.05	205.95	207.60	33.80
	11.10	-2.80	-3.89	-6.07	-2.07	7.41	0.70	11.95	4.60	2.31	-4.23	0.80	19.45
2018	228.60	227.75	214.10	211.75	209.05	202.15	180.40	176.10	186.65	192.60	180.20	171.95	-35.65
	10.12	-0.37	-5.99	-1.10	-1.28	-3.30	-10.76	-2.38	5.99	3.19	-6.44	-4.58	-17.17
2019	195.15	197.80	221.35	223.20	203.00	200.50	192.25	185.30	185.55	187.85	185.05	179.00	7.05
	13.49	1.36	11.91	0.84	-9.05	-1.23	-4.11	-3.62	0.13	1.24	-1.49	-3.27	4.10
2020	174.45	154.85	145.50	150.60	159.00	163.50	184.00	196.05	190.80	201.80	220.20	214.40	35.40
	-2.54	-11.24	-6.04	3.51	5.58	2.83	12.54	6.55	-2.68	5.77	9.12	-2.63	11.81
2021	205.90	219.55	220.00	232.45	237.35	240.20	248.15						33.75
	-3.96	6.63	0.20	5.66	2.11	1.20	3.31						11.81
Average	0.89	1.16	-2.09	2.90	-2.20	0.65	2.74	2.59	-0.91	1.82	0.66	0.77	Average

NICKEL PRICE MOVEMENT SINCE 2012

Year	JAN	FEB	MAR	APR	MAY	JUN	JUL	AUG	SEP	OCT	NOV	DEC	Growth
2012	1050.20	974.30	927.40	936.60	923.80	935.40	892.80	884.40	978.50	878.50	931.70	935.70	-56.50
	5.85	-7.23	-4.81	0.99	-1.37	1.26	-4.55	-0.94	10.64	-10.22	6.06	0.43	-5.69
2013	979.10	895.70	921.50	824.00	826.70	823.90	829.20	928.20	869.80	892.20	836.90	864.50	-71.20
	4.64	-8.52	2.88	-10.58	0.33	-0.34	0.64	11.94	-6.29	2.58	-6.20	3.30	-7.61
2014	855.80	902.80	945.50	1097.40	1139.60	1124.30	1130.40	1140.30	1016.80	971.00	996.80	945.70	81.20
	-1.01	5.49	4.73	16.07	3.85	-1.34	0.54	0.88	-10.83	-4.50	2.66	-5.13	9.49
2015	922.90	874.90	779.70	881.00	808.00	744.50	698.50	668.10	661.90	660.90	583.50	582.00	-363.70
	-2.41	-5.20	-10.88	12.99	-8.29	-7.86	-6.18	-4.35	-0.93	-0.15	-11.71	-0.26	-38.46
2016	579.80	577.60	549.10	629.10	568.50	636.40	700.00	651.20	703.30	696.30	751.20	706.00	169.20
	-0.38	-0.38	-4.93	14.57	-9.63	11.94	9.99	-6.97	8.00	-1.00	7.88	-6.02	29.07
2017	670.30	725.30	640.10	608.90	568.50	600.60	655.70	743.70	692.60	766.30	727.50	783.40	77.40
	-5.06	8.21	-11.75	-4.87	-6.63	5.65	9.17	13.42	-6.87	10.64	-5.06	7.68	10.96
2018	863.10	898.30	840.50	926.40	1024.40	1022.30	944.00	909.30	905.00	860.00	774.80	741.60	-41.80
	10.17	4.08	-6.43	10.22	10.58	-0.20	-7.66	-3.68	-0.47	-4.97	-9.91	-4.28	-5.34
2019	884.90	931.10	904.00	854.60	876.50	906.00	1013.50	1245.40	1216.80	1200.40	1005.50	1029.20	287.60
	19.32	5.22	-2.91	-5.46	2.56	3.37	11.87	22.88	-2.30	-1.35	-16.24	2.36	38.78
2020	943.80	901.00	860.10	922.60	940.40	975.00	1041.90	1135.70	1065.30	1142.70	1206.70	1212.20	183.00
	-8.30	-4.53	-4.54	7.27	1.93	3.68	6.86	9.00	-6.20	7.27	5.60	0.46	17.78
2021	1286.90	1367.70	1184.10	1316.90	1328.40	1363.90	1484.10						151.70
	6.16	6.28	-13.42	11.22	0.87	2.67	8.81						12.51
Average	3.37	1.29	-2.98	4.20	-3.04	0.58	3.21	3.12	-1.76	0.18	-3.13	1.80	Average

## ALUMINIUM PRICE MOVEMENT SINCE 2012

Year	JAN	FEB	MAR	APR	MAY	JUN	JUL	AUG	SEP	OCT	NOV	DEC	Growth
2012	112.15	112.65	108.35	108.05	111.35	105.65	103.95	103.00	110.95	101.85	113.35	111.75	4.80
	4.86	0.45	-3.82	-0.28	3.05	-5.12	-1.61	-0.91	7.72	-8.20	11.29	-1.41	4.49
2013	110.50	105.40	103.65	100.10	105.95	105.05	105.85	122.10	113.15	112.55	106.75	109.20	-2.55
	-1.12	-4.62	-1.66	-3.42	5.84	-0.85	0.76	15.35	-7.33	-0.53	-5.15	2.30	-2.28
2014	103.90	107.00	104.00	106.75	107.65	111.20	121.45	126.70	119.20	126.85	128.35	116.00	6.80
	-4.85	2.98	-2.80	2.64	0.84	3.30	9.22	4.32	-5.92	6.42	1.18	-9.62	6.23
2015	113.45	112.40	111.95	121.40	108.75	104.95	102.00	107.15	102.60	94.40	96.35	100.15	-15.85
	-2.20	-0.93	-0.40	8.44	-10.42	-3.49	-2.81	5.05	-4.25	-7.99	2.07	3.94	-13.66
2016	103.80	111.25	98.90	111.25	104.00	110.55	108.30	107.20	110.55	115.95	118.00	117.20	17.05
	3.64	7.18	-11.10	12.49	-6.52	6.30	-2.04	-1.02	3.12	4.88	1.77	-0.68	17.02
2017	123.40	126.45	126.20	123.90	123.90	123.55	121.95	135.30	137.90	138.60	131.00	143.30	26.10
	5.29	2.47	-0.20	-1.82	0.00	-0.28	-1.30	10.95	1.92	0.51	-5.48	9.39	22.27
2018	141.65	140.50	130.65	148.50	154.15	149.70	141.40	150.10	145.90	143.95	137.20	128.15	-15.15
	-1.15	-0.81	-7.01	13.66	3.80	-2.89	-5.54	6.15	-2.80	-1.34	-4.69	-6.60	-10.57
2019	136.00	151.10	149.15	146.20	145.35	143.20	140.35	138.70	134.60	132.00	133.55	137.25	9.10
	6.13	11.10	-1.29	-1.98	-0.58	-1.48	-1.99	-1.18	-2.96	-1.93	1.17	2.77	7.10
2020	139.10	136.70	134.45	131.00	131.70	137.95	140.90	146.15	143.80	152.95	167.05	160.95	23.70
	1.35	-1.73	-1.65	-2.57	0.53	4.75	2.14	3.73	-1.61	6.36	9.22	-3.65	17.27
2021	162.25	173.50	176.65	193.70	196.65	198.75	206.75						45.80
	0.81	6.93	1.82	9.65	1.52	1.07	4.03						28.46
Average	0.81	2.06	-1.72	3.02	-0.60	-0.82	1.25	3.31	-0.75	-0.12	0.53	0.61	Average



# GENERAL DISCLAIMERS

KEDIA ADVISORY

This Report is prepared and distributed by Kedia Stocks & Commodities Research Pvt Ltd. for information purposes only. The recommendations, if any, made herein are expression of views and/or opinions and should not be deemed or construed to be neither advice for the purpose of purchase or sale through KSCRPL nor any solicitation or offering of any investment /trading opportunity. These information / opinions / views are not meant to serve as a professional investment guide for the readers. No action is solicited based upon the information provided herein. Recipients of this Report should rely on information/data arising out of their own investigations. Readers are advised to seek independent professional advice and arrive at an informed trading/investment decision before executing any trades or making any investments. This Report has been prepared on the basis of publicly available information, internally developed data and other sources believed by KSCRPL to be reliable. KSCRPL or its directors, employees, affiliates or representatives do not assume any responsibility for, or warrant the accuracy, completeness, adequacy and reliability of such information / opinions / views. While due care has been taken to ensure that the disclosures and opinions given are fair and reasonable, none of the directors, employees, affiliates or representatives of KSCRPL shall be liable for any direct, indirect, special, incidental, consequential, punitive or exemplary damages, including lost profits arising in any way whatsoever from the information / opinions / views contained in this Report. The possession, circulation and/or distribution of this Report may be restricted or regulated in certain jurisdictions by appropriate laws. No action has been or will be taken by KSCRPL in any jurisdiction (other than India), where any action for such purpose(s) is required. Accordingly, this Report shall not be possessed, circulated and/ or distributed in any such country or jurisdiction unless such action is in compliance with all applicable laws and regulations of such country or jurisdiction. KSCRPL requires such recipient to inform himself about and to observe any restrictions at his own expense, without any liability to KSCRPL. Any dispute arising out of this Report shall be subject to the exclusive jurisdiction of the Courts in India.

For more details, please **contact:**

 +91 9323406035 / 9619551022

 [info@kediaadvisory.com](mailto:info@kediaadvisory.com)

 [www.kediaadvisory.com](http://www.kediaadvisory.com)

KEDIA STOCKS & COMMODITIES RESEARCH PVT LTD.  
Mumbai, IN.

SEBI REGISTRATION NUMBER - INH000006156

